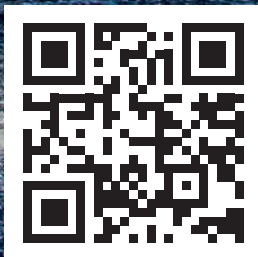





www.tnroffshore.com



**Extensive Range of Containers
and Modular Structures for
Offshore Industry**



 www.tnroffshore.com



TNR Offshore company is the only and fastest-growing DNV 2.7-1 Certified high-quality offshore container manufacturer in Türkiye.

TNR cargo carrying units (CCU's) are specially designed to meet the specific needs of customers.

With an extending product range, we offer constant availability, faster delivery, and after-sales services.

If you are looking for a long-term business partner for your cargo operations look no further we are ready to work together every step of the way as,

A Partner You Can Trust

TNR OFFSHORE CARGO SOLUTIONS



DNV



PRODUCTS

TNR Offshore; offers a full range **DNV 2.7-1** and **ISO 10855** certified containers for the offshore industry including such equipment as cargo carrying units (CCU), tank containers, skips, baskets, workshop, living quarters and cabins.

Our product range constantly expanding to meet specific needs of the offshore industry.

We closely work with our customers to deliver tailor based needs in shorter lead times and cost effective manner.

CERTIFICATES





FEATURES

16 Section Gas Rack is specially designed for offshore use and transportation of pressurized tubes.

- Proven and robust design
- Internal lashing points
- Forklift pockets
- Flexible storage
- Stackable

SPECIFICATION

Certificates and Approvals

- DNV 2.7-1
- ISO 10855
- IMO MSC / Circular 860

Dimensions

- L 1222 mm W 1162 mm H 2285 mm
- L 4 ft W 3.8 ft H 7.5 ft

Weight

- Tare mass: 770 kg / 1697 lb
- Payload: 4000 kg / 8816 lb
- Max. gross mass: 4770 kg / 10513 lb



FEATURES

4800 L Vertical Waste Oil Tank is specially designed for storage and transportation of hazardous chemicals in offshore environment. It is mounted on skid for stability and to withstand dynamic lifting and impact forces in harsh sea conditions

- Proven and robust design
- Forklift pockets
- Design pressure 1.77 bar
- 2.5 inch PSV
- Tank cap. 4800 L
- Drainage and sampling valve

SPECIFICATION

Certificates and Approvals

- DNV 2.7-1
- ISO 10855
- ASME VIII Div.1
- IMO MSC / Circular 860

Dimensions

- L 2200 mm W 2200 mm H 2569 mm
- L 7.2 ft W 7.2 ft H 8.4 ft

Weight

- Tare mass: 3000 kg / 6614 lb
- Payload: 7250 kg / 15984 lb
- Max. gross mass: 10250 kg / 22598 lb



FEATURES

Waste skip containers are designed for the safe and efficient transportation and storage of general waste

- Proven and robust design
- Drainage holes
- Forklift pockets

SPECIFICATION

Certificates and Approvals

- DNV 2.7-1
- ISO 10855
- IMO MSC / Circular 860

Dimensions

- L 3909 mm W 1894 mm H 1410 mm
- L 12.8 ft W 6.2 ft H 4.6 ft

Weight

- Tare mass: 1610 kg / 3548 lb
- Payload: 4890 kg / 10777 lb
- Max. gross mass: 6500 kg / 14326 lb



FEATURES

Cutting Box Containers are designed to safely store, contain and transfer waste produced from offshore drilling.

- Proven and robust design
- Forklift pockets (2 Sets)
- Aluminum lids for easier handling and safe sealing
- Box cap. 3,5m³

SPECIFICATION

Certificates and Approvals

- DNV 2.7-1
- ISO 10855
- IMO MSC / Circular 860

Dimensions

- L 2212 mm W 1852 mm H 1600 mm
- L 7.2 ft W 6 ft H 5.2 ft

Weight

- Tare mass: 1650 kg / 3636 lb
- Payload: 9350 kg / 20607 lb
- Max. gross mass: 11000 kg / 24244 lb



FEATURES

10x8 Refrigerator Containers are specially designed to maintain the Cargo at the required temperatures for the offshore conditions.

- Proven and robust design
- Internal lashing points
- Forklift pockets
- ISO Corner
- Aluminum T-bar floor

SPECIFICATION

Certificates and Approvals

- DNV 2.7-1
- ISO 10855
- IMO MSC / Circular 860

Dimensions

- L 2991 mm W 2438 mm H 2591 mm
- L 10 ft W 8 ft H 8.5 ft

Weight

- Tare mass: 4000kg / 8816 lb
- Payload: 8000 kg / 17632 lb
- Max. gross mass: 12000 kg / 26448 lb

FEATURES

6x6 ft Container is multi-purpose container for transportation of dry goods in offshore environment.

- Proven and robust design
- Internal lashing points
- Forklift pockets (2 Sets)
- Intermediate deck
- Stackable

SPECIFICATION

Certificates and Approvals

- DNV 2.7-1
- ISO 10855
- IMO MSC / Circular 860

Dimensions

- L 1830 mm W 1830 mm H 3007 mm
- L 6 ft W 6 ft H 10 ft

Weight

- Tare mass: 1750 kg / 3858 lb
- Payload: 4500 kg / 9920 lb
- Int. Deck load: 2250 kg/ 4960 lb
- Max. gross mass: 6250 kg / 13779 lb



FEATURES

10x8 ft Container is multipurpose container for transportation of dry goods in offshore environment.

- Proven and robust design
- Internal lashing points
- Forklift pockets
- ISO Corner
- Stackable

SPECIFICATION

Certificates and Approvals

- DNV 2.7-1
- ISO 10855
- IMO MSC / Circular 860

Dimensions

- L 2991 mm W 2438 mm H 2570 mm
- L 10 ft W 8 ft H 8.5 ft

Weight

- Tare mass: 2220 kg / 4894 lb
- Payload: 9530 kg / 21010 lb
- Max. gross mass: 11750 kg / 25904 lb

FEATURES

10x8 ft Open Top Containers are designed for offshore transportation of equipment that required loading by crane.

- Proven and robust design
- Internal lashing points
- Forklift pockets
- ISO Corner
- Stackable

SPECIFICATION

Certificates and Approvals

- DNV 2.7-1
- ISO 10855:2018
- IMO MSC / Circular 860

Dimensions

- L 2991mm W 2438 mm H 2789 mm
- L 10 ft W 8 ft H 9 ft

Weight

- Tare mass: 2500 kg / 5510 lb
- Payload: 7900 kg / 17411 lb
- Max. gross mass: 10400 kg / 22922 lb



FEATURES

12x8x9 ft Open Top Container is specially designed for transportation of equipment that required loading by crane

- Proven and robust design
- Forklift Pockets
- Internal lashing points
- Side Doors
- ISO corner

SPECIFICATION

Certificates and Approvals

- DNV 2.7-1
- ISO 10855:2018
- IMO MSC / Circular 860

Dimensions

- L 3658 mm W 2438 mm H 2789 mm
- L 12 ft W 7 ft H 9 ft

Weight

- Tare mass: 2850 kg / 6283 lb
- Payload: 7150 kg / 15763 lb
- Max. gross mass: 10000 kg / 22046 lb

FEATURES

15x8 ft Half Height Cargo Containers are specially designed for transportation of drill pipe, casing, tools and other long materials

- Proven and robust design
- Forklift pockets
- Internal lashing points
- Removable side door with forklift pockets

SPECIFICATION

Certificates and Approvals

- DNV 2.7-1
- ISO 10855
- IMO MSC / Circular 860

Dimensions

- L 4585 mm W 2451 mm H 1510 mm
- L 15 ft W 8 ft H 4.5 ft

Weight

- Tare mass: 2800 / 6173 lb
- Payload: 15000 kg / 33060 lb
- Max. gross mass: 17800 kg / 39242 lb



FEATURES

20x8 ft Container is multi-purpose container for transportation of dry goods in offshore environment.

- Proven and robust design
- Internal lashing points
- Forklift pockets
- ISO Corner
- Stackable

SPECIFICATION

Certificates and Approvals

- DNV 2.7-1
- ISO 10855
- IMO MSC / Circular 860

Dimensions

- L 6058 mm W 2438 mm H 2570 mm
- L 20 ft W 8 ft H 8.5 ft

Weight

- Tare mass: 4200 kg / 9260 lb
- Payload: 11500 kg / 25353 lb
- Max. gross mass: 15700 kg / 34613 lb

FEATURES

20x8 ft Open Top Containers are designed for offshore transportation of equipment that required loading by crane.

- Proven and robust design
- Internal lashing points
- Forklift pockets
- ISO Corner
- Stackable

SPECIFICATION

Certificates and Approvals

- DNV 2.7-1
- ISO 10855:2018
- IMO MSC / Circular 860

Dimensions

- L 6058 mm W 2438 mm H 2843 mm
- L 20 ft W 8 ft H 9.3 ft

Weight

- Tare mass: 4550kg / 1028 lb
- Payload: 13250 kg / 29203 lb
- Max. gross mass: 17800 kg / 39231 lb



FEATURES

20x8 ft Half Height Cargo Containers are specially designed for transportation of drill pipe, casing, tools and other long materials

- Proven and robust design
- Forklift pockets
- Internal lashing points
- Removable side door with forklift pockets

SPECIFICATION

Certificates and Approvals

- DNV 2.7-1
- ISO 10855
- IMO MSC / Circular 860

Dimensions

- L 6023 mm W 2451 mm H 1591 mm
- L 20 ft W 8 ft H 5 ft

Weight

- Tare mass: 3500 kg / 7716 lb
- Payload: 14000 kg / 30864 lb
- Max. gross mass: 17500 kg / 38580 lb

FEATURES

20x8x5 ft Half Height Cargo Containers are specially designed for transportation of drill pipe, casing, tools and other long materials

- Proven and robust design
- Forklift pockets
- Internal lashing points

SPECIFICATION

Certificates and Approvals

- DNV 2.7-1
- ISO 10855
- IMO MSC / Circular 860

Dimensions

- L 6023 mm W 2451 mm H 1591 mm
- L 20 ft W 8 ft H 5 ft

Weight

- Tare mass: 3500 kg / 7716 lb
- Payload: 14000 kg / 30864 lb
- Max. gross mass: 17500 kg / 38580 lb



FEATURES

10x8x3 ft Basket Container is specially designed for offshore transportation of equipment that required loading by crane

- Proven and robust design
- Forklift pockets
- Internal lashing points

SPECIFICATION

Certificates and Approvals

- DNV 2.7-1
- ISO 10855
- IMO MSC / Circular 860

Dimensions

- L 3063 mm W 2453 mm H 1029 mm
- L 10 ft W 8 ft H 3.37 ft

Weight

- Tare mass: 1850 kg / 4078 lb
- Payload: 5650 kg / 12456 lb
- Max. gross mass: 7500 kg / 16534 lb

FEATURES

10x8x4 ft Open Top Basket is specially designed for transportation of equipment that required loading by crane.

- Proven and robust design
- Forklift pockets
- Internal lashing points
- Side doors
- ISO corners

SPECIFICATION

Certificates and Approvals

- DNV 2.7-1
- ISO 10855
- IMO MSC / Circular 860

Dimensions

- L 3106 mm W 2456 mm H 1310 mm
- L 10 ft W 8 ft H 4 ft

Weight

- Tare mass: 1800kg / 3968 lb
- Payload: 8200 kg / 18077 lb
- Max. gross mass: 10000 kg / 22046 lb



FEATURES

10x8 ft Half Height Containers are designed for offshore transportation of equipment that required loading by crane.

- Proven and robust design
- Forklift pockets
- Internal lashing points
- Side doors
- ISO corners

SPECIFICATION

Certificates and Approvals

- DNV 2.7-1
- ISO 10855
- IMO MSC / Circular 860

Dimensions

- L 2991 mm W 2438 mm H 1370 mm
- L 10 ft W 8 ft H 4.5 ft

Weight

- Tare mass: 1660 kg / 3659 lb
- Payload: 5970 kg / 13161 lb
- Max. gross mass: 7630 kg / 16817 lb

FEATURES

20 ft Short Cargo Basket is specially designed for transportation of equipment that required loading by crane.

- Proven and robust design
- Forklift pockets
- Internal lashing points

SPECIFICATION

Certificates and Approvals

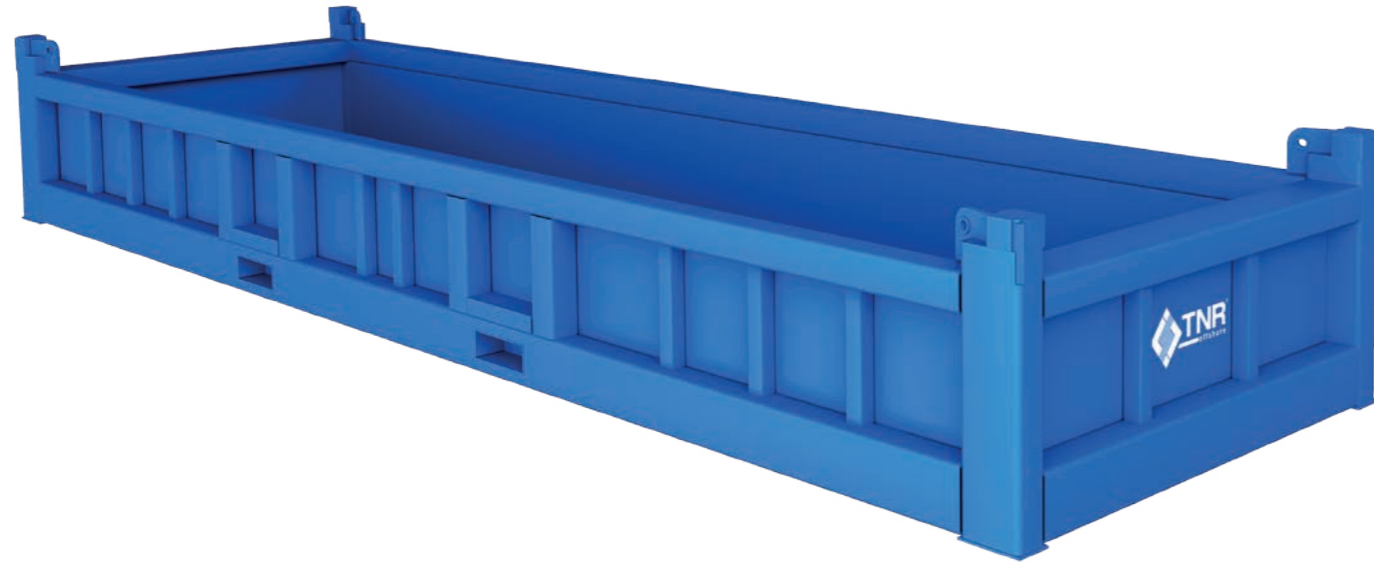
- DNV 2.7-1
- ISO 10855
- IMO MSC / Circular 860

Dimensions

- L 6288 mm W 1190 mm H 1396 mm
- L 20 ft W 4 ft H 4.5 ft

Weight

- Tare mass: 2000 kg / 4409 lb
- Payload: 8000 kg / 17636 lb
- Max. gross mass: 10000 kg / 22046 lb



FEATURES

25x8x3 ft Open Top Basket is specially designed for transportation of equipment that required loading by crane

- Proven and robust design
- Forklift Pockets
- Internal lashing points

SPECIFICATION

Certificates and Approvals

- DNV 2.7-1
- ISO 10855
- IMO MSC / Circular 860

Dimensions

- L 7633 mm W 2451 mm H 1134 mm
- L 25 ft W 8 ft H 3 ft

Weight

- Tare mass: 3800 kg / 8377 lb
- Payload: 13200 kg / 29101 lb
- Max. gross mass: 17000 kg / 37479 lb

FEATURES

40x8 ft Basket is specially designed for transportation of long materials that required loading by crane

- Proven and robust design
- Forklift Pockets
- Internal lashing points

SPECIFICATION

Certificates and Approvals

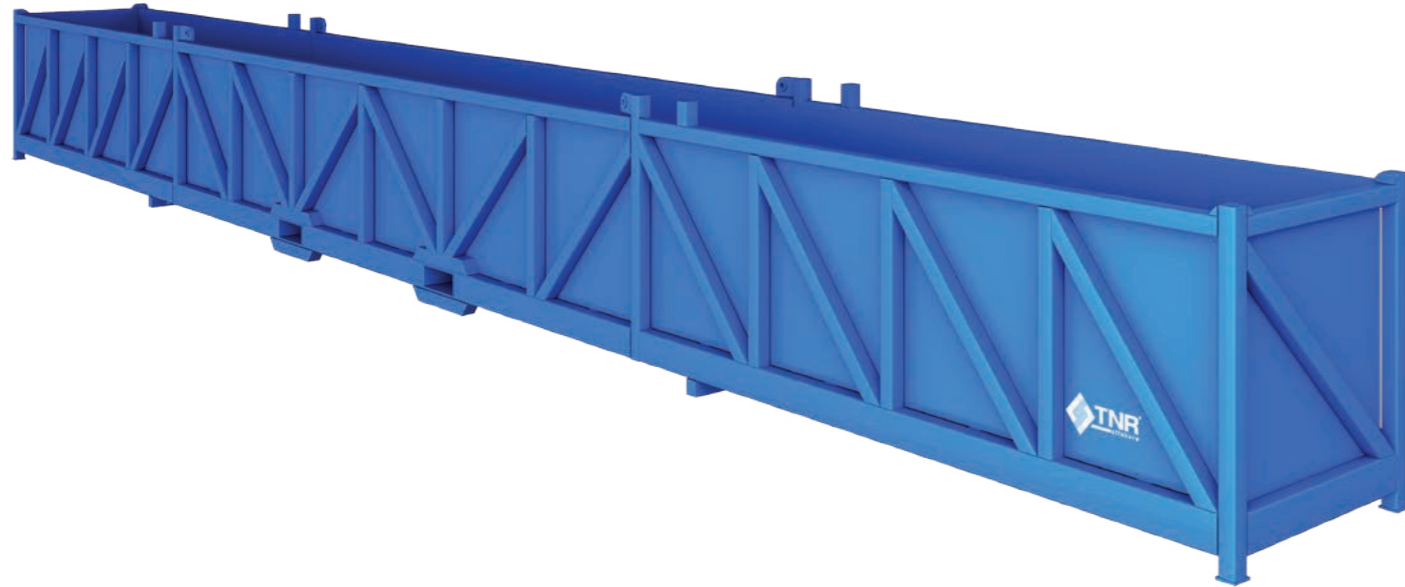
- DNV 2.7-1
- ISO 10855
- IMO MSC / Circular 860

Dimensions

- L 12182 mm W 2438 mm H 1029 mm
- L 40 ft W 8 ft H 3.3 ft

Weight

- Tare mass: 4600 kg / 10141 lb
- Payload: 12000 kg / 26455 lb
- Max. gross mass: 16600 kg / 36597 lb



FEATURES

45x4 ft Basket is specially designed for transportation of long materials that required loading by crane

- Proven and robust design
- Forklift Pockets
- Internal lashing points

SPECIFICATION

Certificates and Approvals

- DNV 2.7-1
- ISO 10855
- IMO MSC / Circular 860

Dimensions

- L 13656 mm W 1150 mm H 1400 mm
- L 45 ft W 4 ft H 5 ft

Weight

- Tare mass: 4000 kg / 8819 lb
- Payload: 10000 kg / 22047 lb
- Max. gross mass: 14000 kg / 30865 lb

FEATURES

60x4x5 ft Open Top Basket is specially designed for transportation of long materials that required loading by crane.

- Proven and robust design
- Forklift pockets
- Internal lashing points

SPECIFICATION

Certificates and Approvals

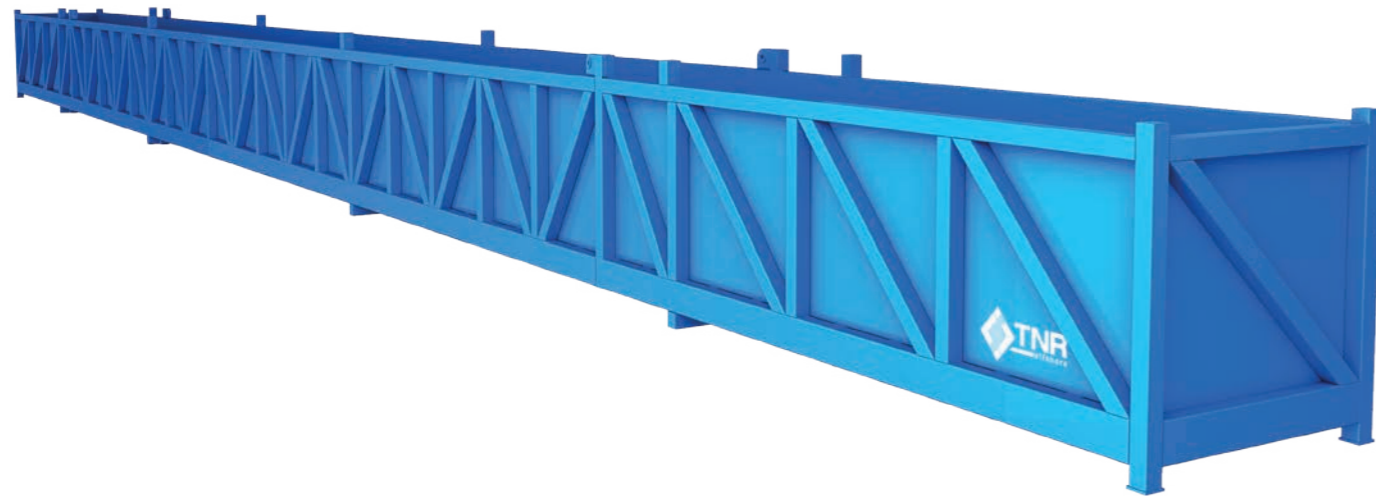
- DNV 2.7-1
- ISO 10855
- IMO MSC / Circular 860

Dimensions

- L 18288 mm W 1200 mm H 1337 mm
- L 60 ft W 4 ft H 5 ft

Weight

- Tare mass: 5000 kg / 11023 lb
- Payload: 10000 kg / 22046 lb
- Max. gross mass: 15000 kg / 33069 lb



FEATURES

70 ft Basket is specially designed for transportation of long materials that required loading by crane

- Proven and robust design
- Forklift Pockets
- Internal lashing points

SPECIFICATION

Certificates and Approvals

- DNV 2.7-1
- ISO 10855
- IMO MSC / Circular 860

Dimensions

- L 21260 mm W 1190 mm H 1352 mm
- L 70 ft W 4 ft H 4.4 ft

Weight

- Tare mass: 6050 kg / 13337 lb
- Payload: 8950 kg / 19731 lb
- Max. gross mass: 15000 kg / 33069 lb

					
16 SECTION GAS RACK PAGE NUMBER: 04	4800 L VERTICAL WASTE OIL TANK (T3) PAGE NUMBER: 05	WASTE SKIP CONTAINER 6m³ PAGE NUMBER: 06	MUD CUTTING BOX CONTAINER 3.5m³ PAGE NUMBER: 07	10x8 FT REFRIGERATOR CONTAINER PAGE NUMBER: 08	6x6 FT DRY GOODS CONTAINER PAGE NUMBER: 09
					
10x8 FT DRY GOODS CONTAINER PAGE NUMBER: 10	10x8 FT OPEN TOP CONTAINER PAGE NUMBER: 11	12x8 FT OPEN TOP CONTAINER PAGE NUMBER: 12	15x8 FT HALF HEIGHT CARGO CONTAINER PAGE NUMBER: 13	20x8 FT DRY GOODS CONTAINER PAGE NUMBER: 14	20x8 FT OPEN TOP CONTAINER PAGE NUMBER: 15
					
20x8 FT HALF HEIGHT CARGO CONTAINER (REMOVABLE SIDE DOOR) PAGE NUMBER: 16	20x8 FT HALF HEIGHT CARGO CONTAINER PAGE NUMBER: 17	10x8x3 FT BASKET PAGE NUMBER: 18	10x8x4 FT OPEN TOP BASKET PAGE NUMBER: 19	10x8 FT HALF HEIGHT CONTAINER PAGE NUMBER: 20	20x4 FT SHORT CARGO BASKET PAGE NUMBER: 21
					
25x8x3 FT OPEN TOP BASKET PAGE NUMBER: 22	40x8 FT BASKET PAGE NUMBER: 23	45x4 FT BASKET PAGE NUMBER: 24	60x4 FT OPEN TOP BASKET PAGE NUMBER: 25	70 FT BASKET PAGE NUMBER: 26	





www.tnroffshore.com

✉ contact@tnroffshore.com

☎ +90(312) 815 22 36

📍 Saray Mahallesi 55. Cadde No:7 /4
Kahramankazan 06980 Ankara / TÜRKİYE

